

SINGLE MODEL: ILB10 / 15 - TR - SG - NC - 120 / UNV

**IMPORTANT** - READ CAREFULLY BEFORE INSTALLING FIXTURE. RETAIN THESE INSTRUCTIONS FOR FUTURE REFERENCE.

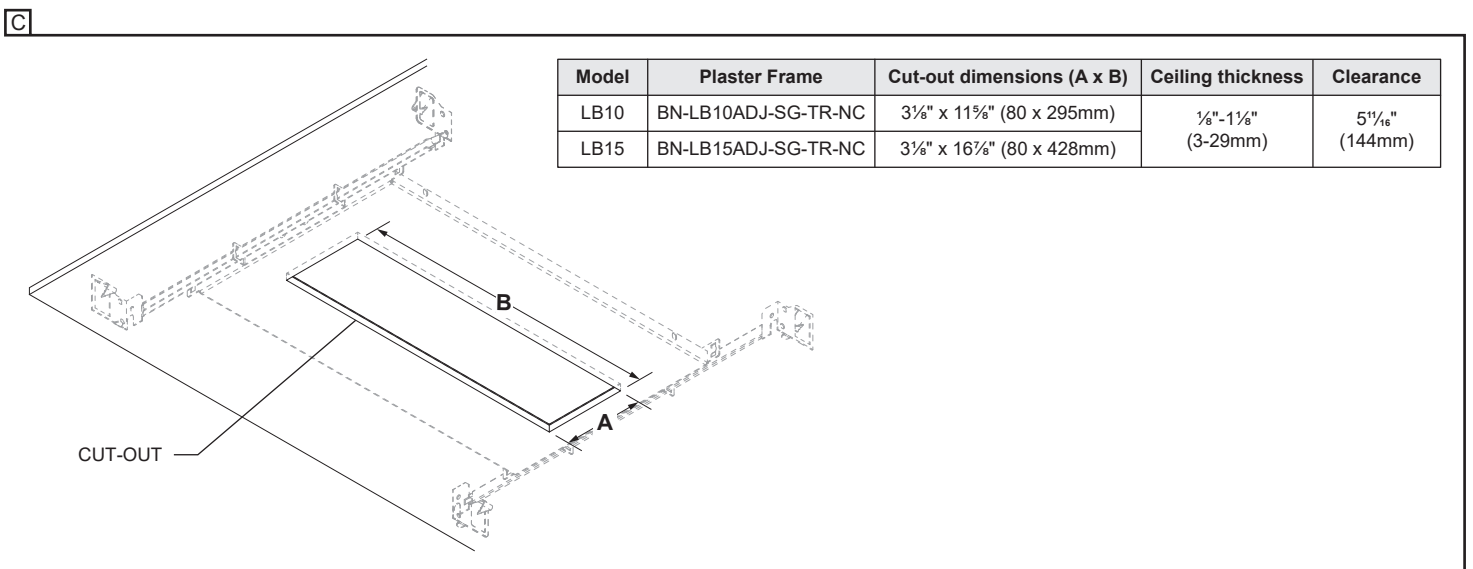
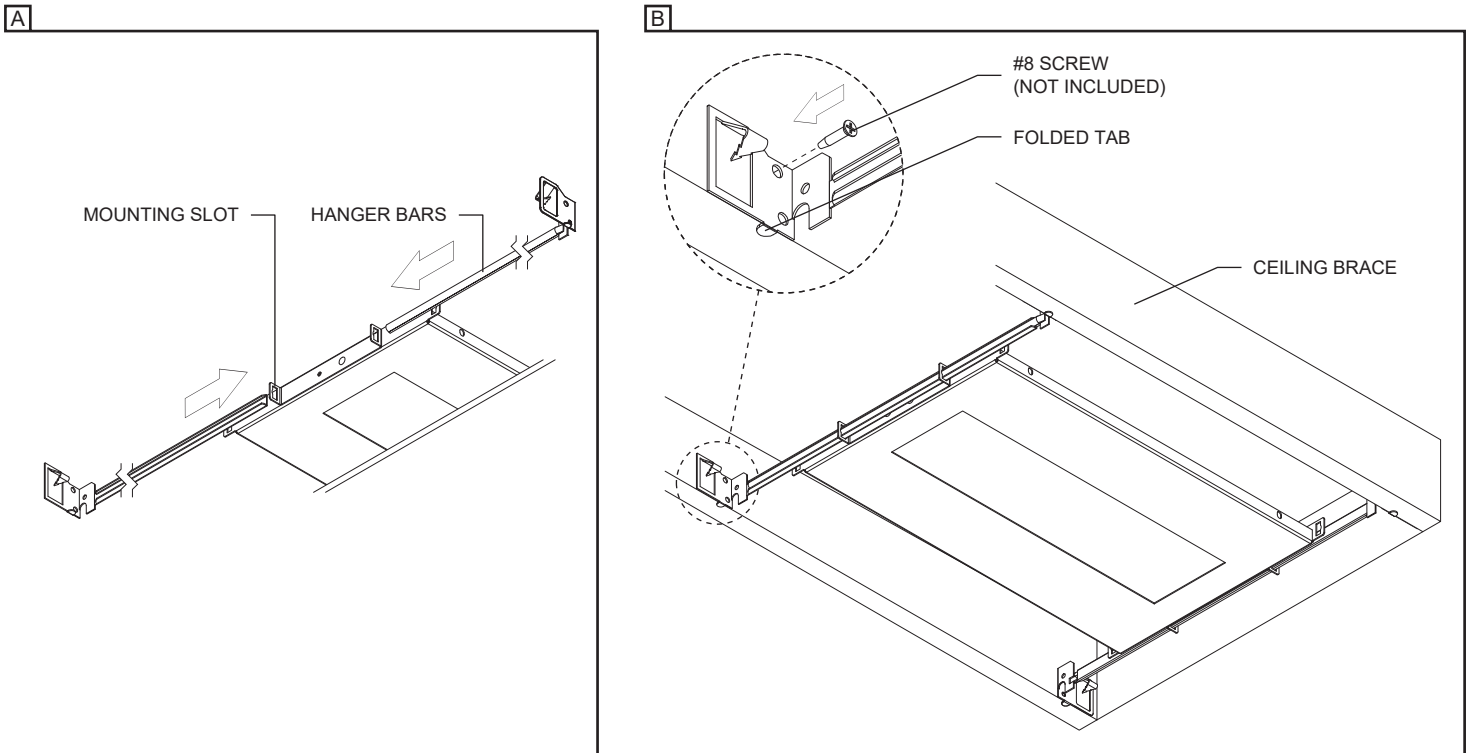
THIS PRODUCT MUST BE INSTALLED IN ACCORDANCE WITH THE NATIONAL ELECTRICAL CODE AND ALL APPLICABLE LOCAL CODES, BY A PERSON FAMILIAR WITH THE CONSTRUCTION AND OPERATION OF THE PRODUCT, AND THE HAZARDS INVOLVED. PROPER GROUNDING IS REQUIRED FOR SAFETY.

### NEW CONSTRUCTION PLASTER FRAME INSTALLATION (NC) INTEGRAL DRIVER (120V / 120-277V) DIMMING 0-10V - TRIAC / ELV

A- ENGAGE (4) HANGER BARS IN HOUSING SLOTS AVAILABLE AND CONNECT THEM TOGETHER.

B- FASTEN HANGER BARS TO CEILING BRACE WITH #8 SCREWS (**NOT INCLUDED**). PLASTER FRAME MUST BE FLUSH WITH CEILING BRACE AND INSURE SMALL FOLDED TAB IS PLACED UNDER CEILING BRACE.

C- INSTALL DRYWALL AND MAKE THE CUT-OUT OPENING (**SEE DIMENSIONS BELOW**).



## NEW CONSTRUCTION PLASTER FRAME INSTALLATION (NC) - INTEGRAL DRIVER

A- OPEN THE FIXTURE HOUSING'S COVER PLATE.

B- INSERT A FEEDER BX CABLE(**NOT INCLUDED**) INTO THE BX CONNECTOR (**INCLUDED**).

\*ADDITIONAL BX CABLE AND BX CONNECTOR (**NOT INCLUDED**) MUST BE ADDED FOR 0-10V DIMMING.

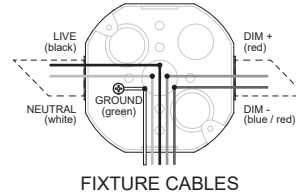
C- MAKE ALL NECESSARY CONNECTIONS (**FOLLOWING WIRING DIAGRAM**) USING THE QUICK CONNECTORS (**INCLUDED**).

D- CLOSE THE HOUSING AND TIGHTEN THE PHILLIPS SCREW.

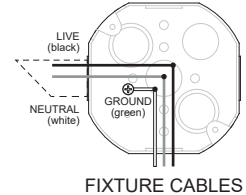
A + B + C + D

### WIRING DIAGRAM

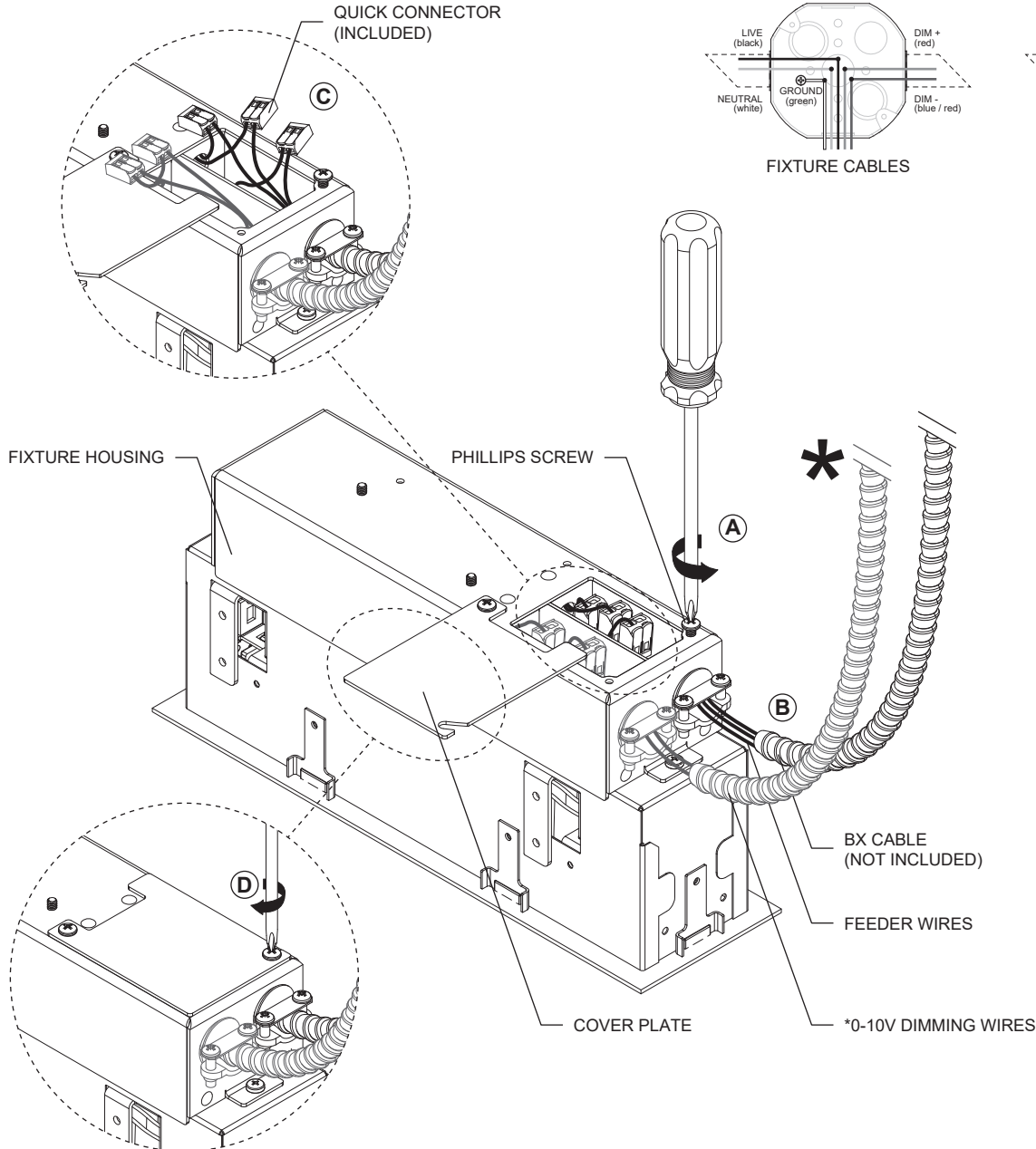
DIMMING 120-277V  
0-10V (D10)



DIMMING 120V ONLY  
TRIAC / ELV (LTE)



\*for reference only



## FIXTURE INSTALLATION

A- INSERT THE FIXTURE INTO THE CEILING.

B- HOLD THE FIXTURE IN PLACE AND WITH A SCREWDRIVER, TURN THE BRACKET PHILLIPS SCREW CLOCKWISE TO OPEN THE MOUNTING BRACKETS AND LOWER ALL (4) BRACKETS AGAINST THE CEILING.

A + B

