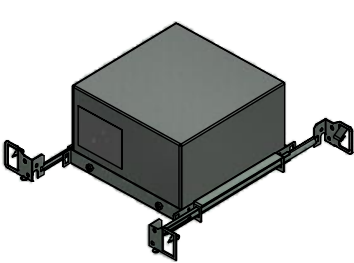
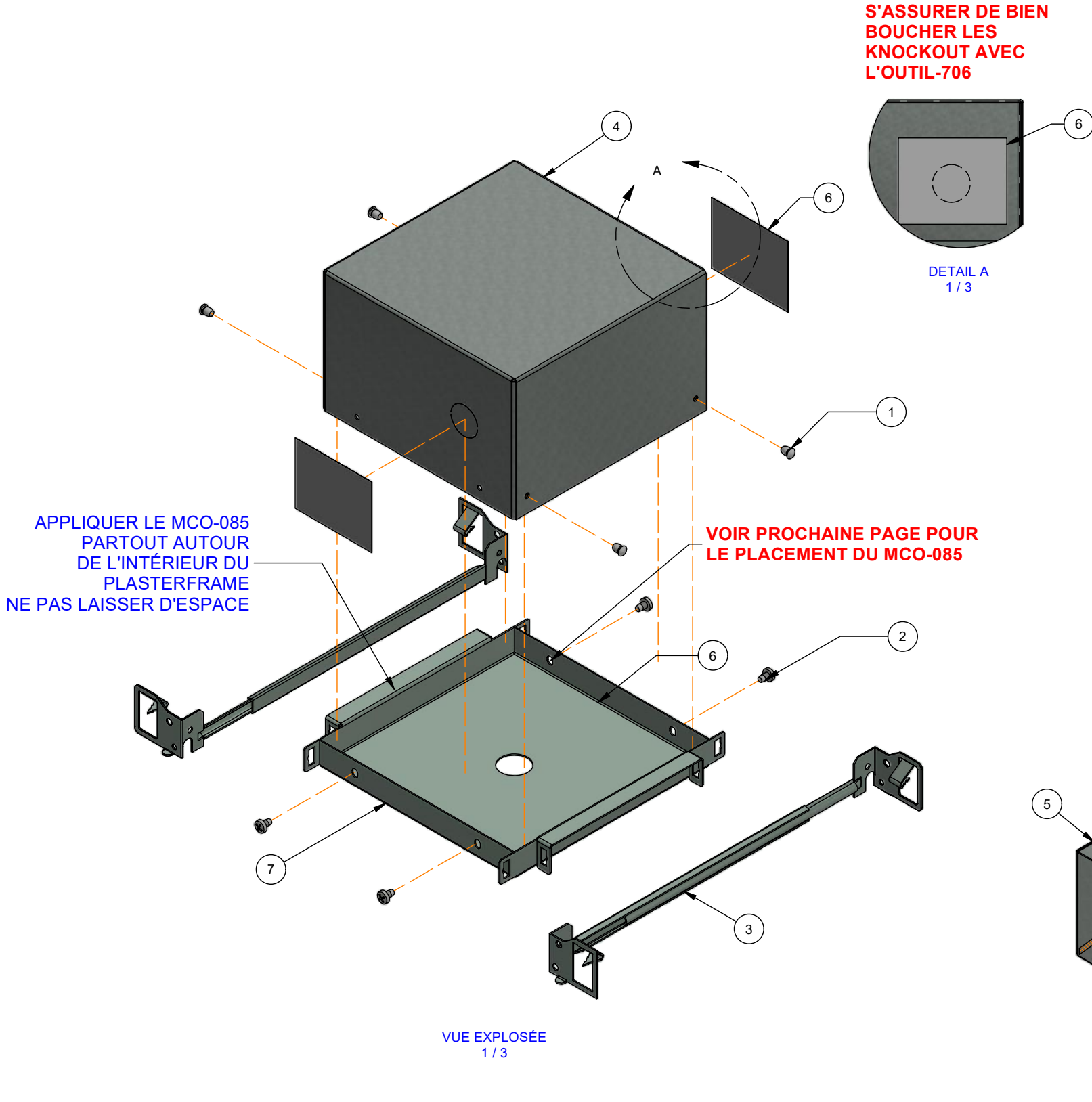
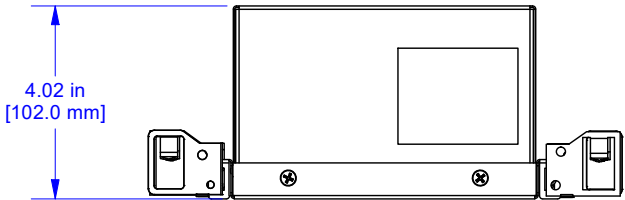


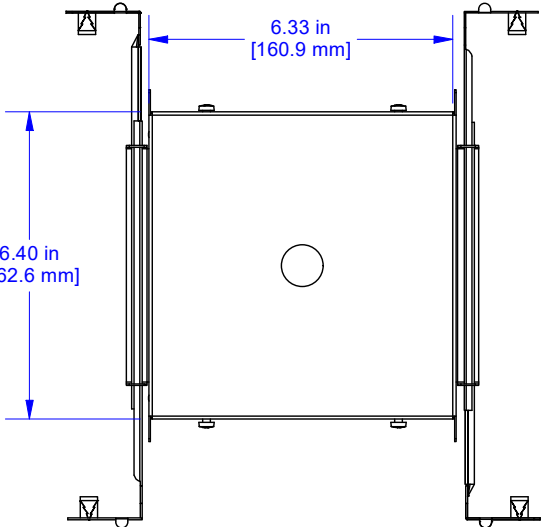
LISTE DE COMPOSANTES			
ITEM	DESCRIPTION	QTÉ.	ARTICLE
1	POP RIVET, Ø1/8", 0.265"L, TÊTE Ø1/4" , ALUMINIUM / ACIER	4	FAS-217
2	VIS AUTO-TARAUDEUSE (TYPE 23) PAN À PRISE PHILIPS, 8-32 X 0.25"L, ACIER ZINGUÉ	4	FAS-450
3	BARRE DE RETENUE METAL MALE/FEMALE 9" TO 15"	2	HOU-695
4	HOUSING LASER, 6.30"x6.30"x3.94", 22GA GALVANIZED	1	HOU-1323
5	SILICONE UL94 RATED (OUTIL-222), 300 ml	0.0625	OUTIL-222
6	3M SILVER FOIL TAPE 3340, 2-1/2" x 50 yd, 4.0 mil, UL 181A-P	2 x 1.5in	OUTIL-706
7	PLASTER FRAME,7.33"x7.33"x0.82",Ø22mm/0.866",22GA,ACIER GALV.	1	PFR-047



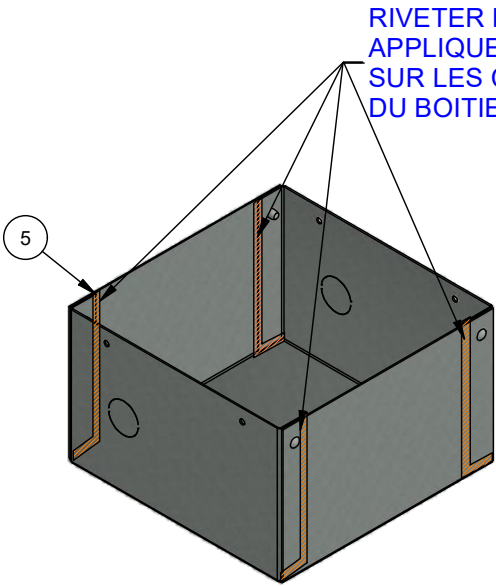
**VUE ISOMÉTRIQUE**  
1 : 8



**VUE DE FACE**  
1 : 4



**VUE DE DESSOUS**  
1 : 4



**VUE ISOMÉTRIQUE**  
1 : 4

dessiné par:	<b>iGuzzini</b>	9320 Boul. St-Laurent #100 Montreal, Quebec H2N 1N7 CANADA	créé le:	2021-11-29	page :	1 / 1
CS						
app. par:	<b>AGB</b>		titre:	<b>BOITIER CHICAGO PLENUM LASER FIXED17mm TR,REM</b>		
projection:			no. pièce:	<b>BI-LAS17RT-CP</b>		